





The use of drawings by the Customer acts as an agreement to the following statements. The Customer must not use the drawing if it does not agree with any of the following statements:
All drawings are based upon the information supplied by third parties and as such their accuracy cannot be guaranteed. All features are approximate and subject to clarification by a detailed topographical survey, statutory service enquiries and confirmation of the legal boundaries. Do not scale the drawing. Figure dimensions must be used in all cases. All dimensions must be checked on site. Any discrepancies must be reported in writing to Colour UDL before proceeding. All drawings are copyright protected. Refer to full Terms & Conditions at www.colour-udl.com

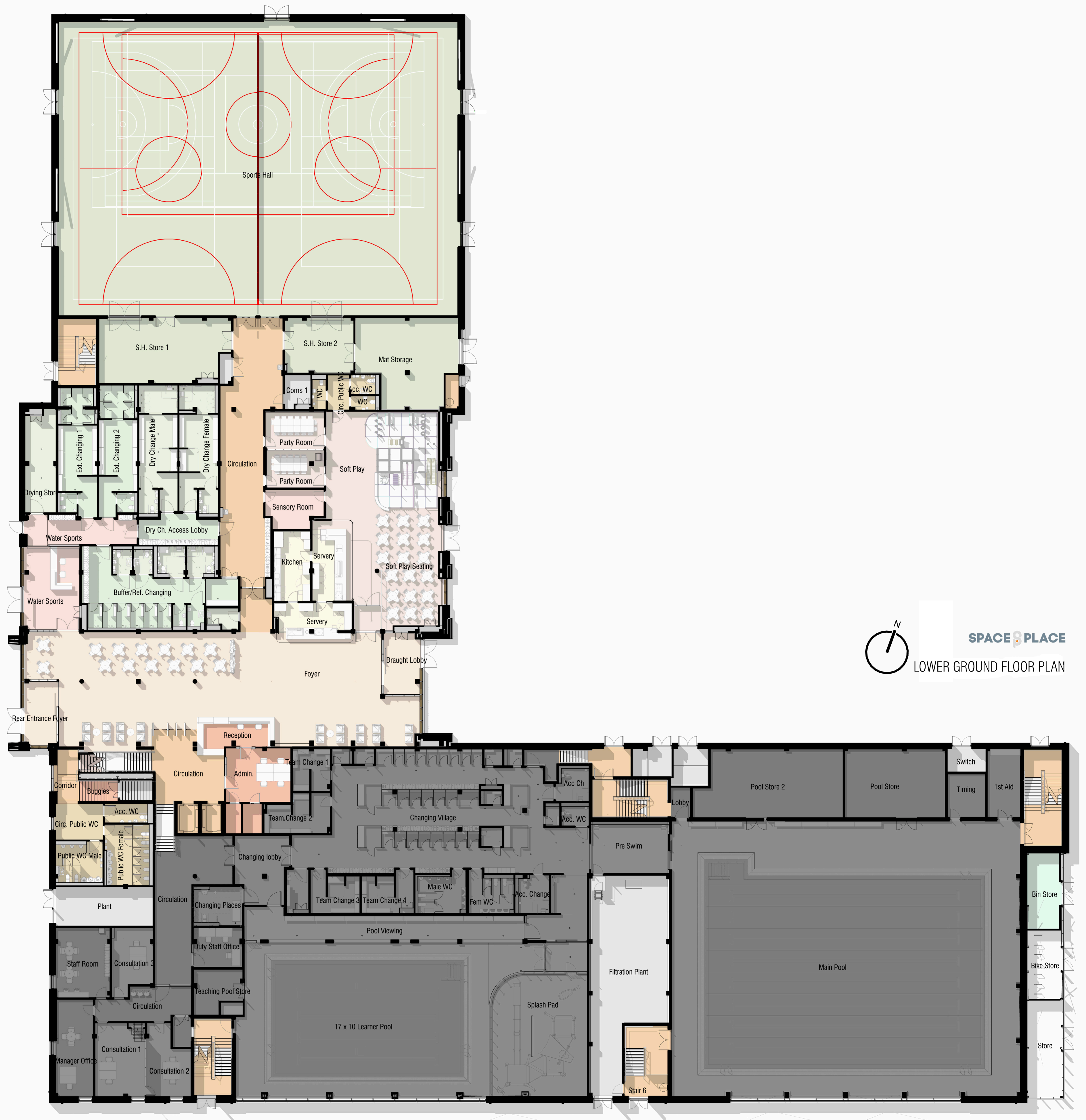
- Legend
- Existing trees to be retained
 - Proposed trees Extra heavy standards
 - Proposed hedge 2.5m planted at 0.5m centres double staggered row
 - Proposed shrub planting
 - Proposed amenity grass A21 Low Maintenance by Gormall or similar approved
 - Running track Asphalt with red droppings by USTCCOLAS or similar approved
 - Running track Asphalt with buff droppings by USTCCOLAS or similar approved
 - Existing paving to be retained
 - Existing paving to be relaid
 - Pava flagstone by AG or similar approved Colour: Taupe Size: 400x200x80mm
 - Pava flagstone by AG or similar approved Colour: Taupe Size: 200x100x80mm
 - Black asphalt by Tarmac Loading to vary
 - Vehicle tarmac by Tarmac
 - Vier post Colour: TITC
 - Grasscrete
 - Cycle shelter New 10m wide shelter by Blue Dock Solutions or similar approved
 - Sheffield cycle stands
 - Stainless steel bollards
 - Stainless steel drop bollards
 - Furniture Existing benches to be retained
 - Furniture Existing picnic tables to be retained
 - Furniture Existing benches to be retained and relocated
 - Furniture New benches with back to match existing
 - Furniture New picnic tables to match existing
 - Furniture New benches without back to match existing
 - Play equipment
 - Pontoon
 - Existing rock climbing boulders to be retained along with safety surfacing
 - 1.2m high bow top fencing with gates around play area and dog spending area
 - 2m height close board fence with double leaf gate to sub station
 - EV Active bays
 - EV Passive bays
- Note:
Existing historical signage to be retained and relocated if necessary

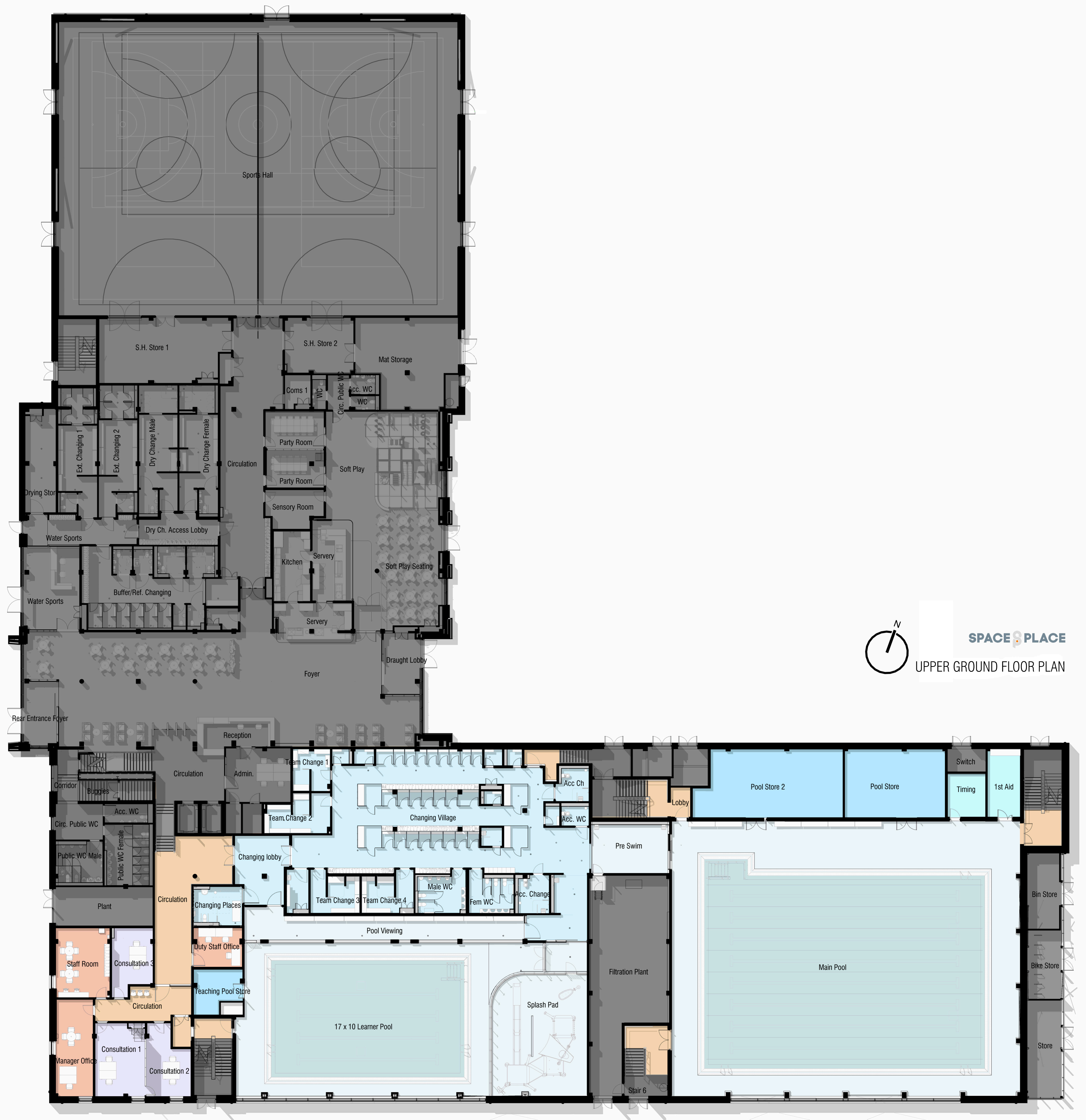
C01	Updated following VE	18/03/25	CT	CT
C02	Updated following VE	06/03/25	CT	CT
C03	Construction issue	01/11/24	JP	CT
I1	Update to layout	27/09/24	BF	CT
I2	Road line added	03/06/24	CT	CT
O7	Updated following layout change	20/01/25	CT	CT
O8	Updated following layout change	15/04/24	OC	CT
O9	Amending map locations added	19/06/25	CT	CT
O6	Updated following layout change	07/06/23	CT	CT
O5	New access road added	21/03/23	CT	CT
O4	Updated following layout change	07/03/23	CT	CT
O3	Updated following comments	19/03/23	CT	CT
O2	Updated following comments	23/11/22	CT	CT
O1	Final issue	21/11/22	CT	CT
Rev	Amendments	Date	Drawn	Child

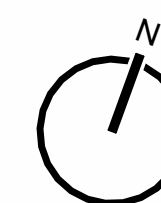
Project
Enniskillen Leisure Centre
Drawing Title
Landscape Masterplan

Project No. 2029 Scale @ A0 1:500 Project Status SS
Drawing No. ELC/02/22-00-DR-L1-10000 Revision C11

London 0203 924 9888
Newcastle 0191 24 24 224
York 01904 925 888
colour-udl.com



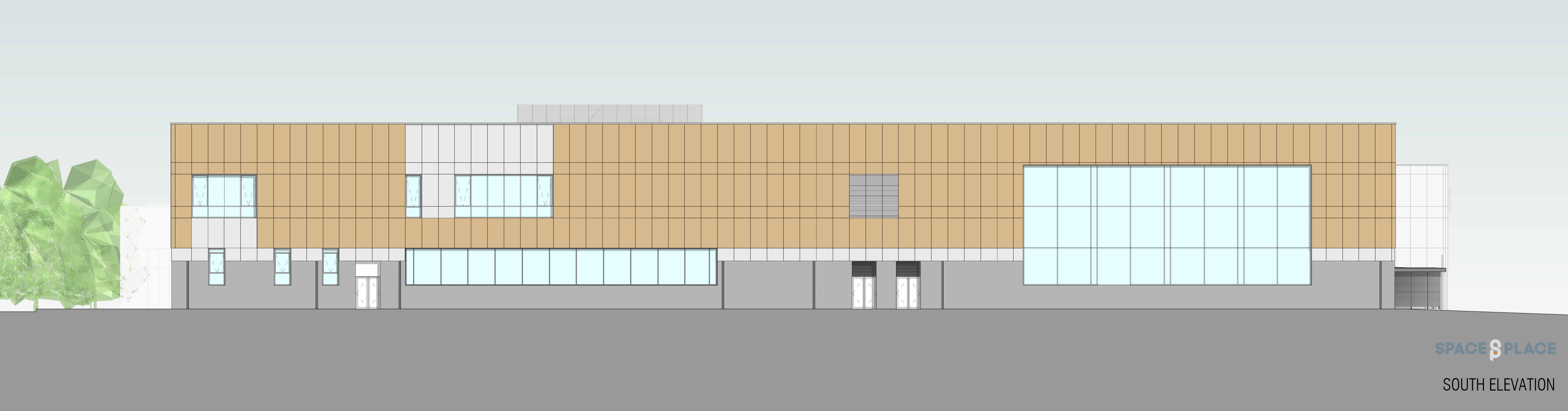


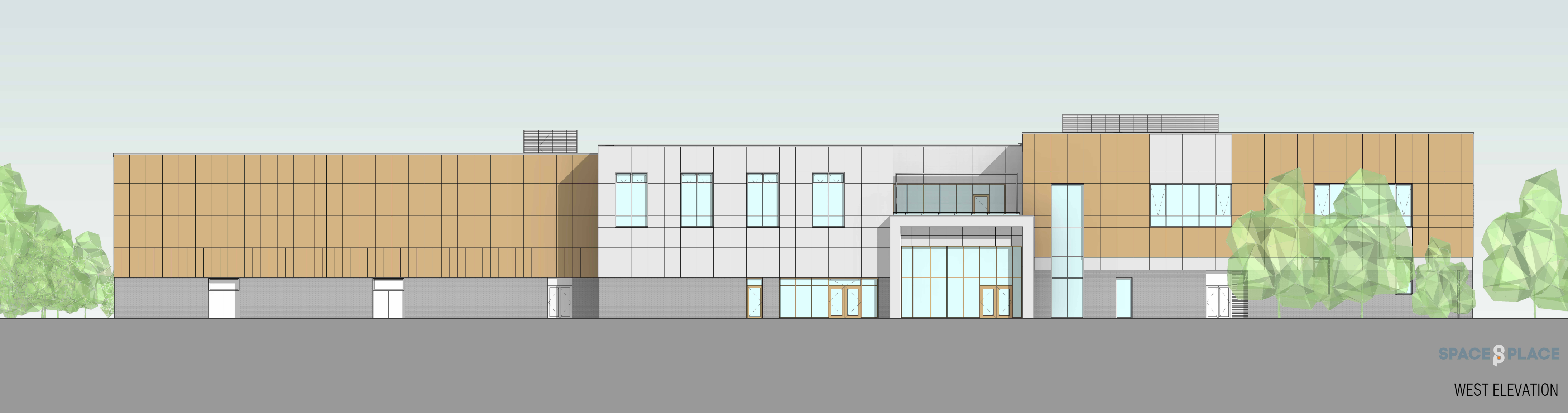


SPACE PLACE

FIRST FLOOR PLAN









Land
Forum

