

YOUR Plans YOUR Future YOUR Say

Issue 2
The Evidence Base

A New Community Plan and Local Development Plan

Improving **social**, **economic** and **environmental** wellbeing and achieving a better quality of life for our people, communities and place is a key priority for Fermanagh and Omagh District Council.

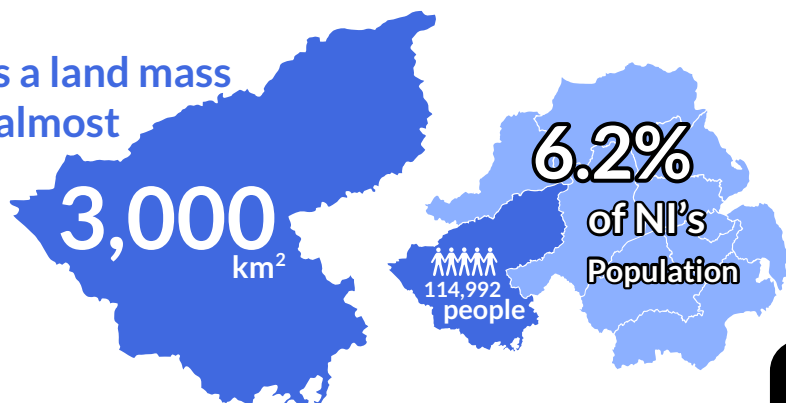
The story behind the evidence

Citizen participation and involvement is very important in developing the Community Plan and the Local Development Plan Preferred Options Paper. From the outset, this has been led by evidence and data to ensure a robust Plan that deals with real local issues. The evidence which we have gathered to date helps us to understand what life is like for people living, visiting and working in the Fermanagh and Omagh area. It is only when we fully understand what is currently happening in our area, that we can identify where improvements are needed and, ultimately, achieve better social, economic and environmental outcomes for all.

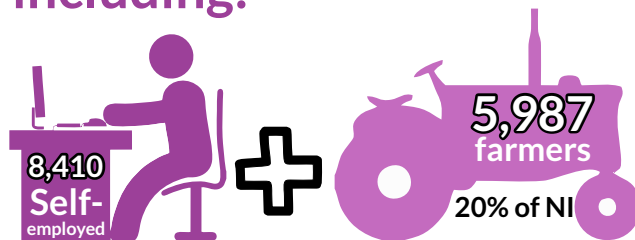


The Fermanagh and Omagh District covers almost 3000km² in landmass and is home to 115, 000 people. It is by far the largest geographically of the 11 Council areas, whilst also being the most sparsely populated. The district is the most westerly in Northern Ireland and borders 4 counties of the Republic of Ireland, namely Donegal, Leitrim, Cavan and Monaghan. The challenges presented by the UK's decision to leave the EU are likely to impact significantly in this area. People living in Fermanagh and Omagh generally have a strong sense of place and pride in their local area, with evidence of high levels of appreciation for the surrounding outstanding and unique natural environment.

has a land mass
of almost



52,593 jobs in the District including:



Key Statistical Information:



Fermanagh & Omagh
District Council
Comhairle Ceantair
Fhear Manach agus na hÓmaí

Fermanagh and Omagh
Community Planning Partnership



Key Statistical Information continued:



Features of the outstanding natural environment

85% of businesses employ <5 people

45% have a turnover <£50,000 per annum

NI Comparisons:
<5 people = 76%
Turnover = 27%

15.4%
65 or older
Rising to 22.5% in 2030

59.3%
of working age economically active

Compared to NI average of
60.2%

23,500
hectares of woodland

30
Priority Habitats

216
Priority Species

Community Planning Partners and the Fermanagh and Omagh District Council Planning Department are committed to carrying out joint community consultation and engagement, letting you know what is happening and, more importantly, supporting you to play an active part in contributing to both plans.

The next issue of this bulletin will update you on the Sustainability Appraisal being undertaken for the Local Development Plan and the Strategic Environmental Assessment of the Community Plan. Both are statutory processes that help to ensure our plans meets the needs of local people and while providing for the needs of future generations and places.

CONTACT US FOR MORE INFORMATION OR TO RECEIVE THIS INFORMATION IN AN ALTERNATIVE FORMAT:

Community Planning Team at:
The Grange, Mountjoy Road,
Omagh, Co Tyrone, BT79 7BL
Telephone: 0300 303 1777
Text phone: 028 8225 6216
Email: communityplanning@fermanaghomagh.com

Local Development Plan Team at:
The Grange, Mountjoy Road,
Omagh, Co Tyrone, BT79 7BL
Telephone: 0300 303 1777
Text phone: 028 8225 6216
Email: planning@fermanaghomagh.com



Fermanagh and Omagh
District Council



@fermanaghomagh



fermanaghomagh.com

A New
Community
Plan

Local
Development
Plan Preferred
Options Paper

YOUR Plans YOUR Future YOUR Say

A New Community Plan and Local Development Plan



Fermanagh & Omagh
District Council
Comhairle Ceantair
Fhear Manach agus na hÓmaí

Fermanagh and Omagh
Community Planning Partnership

