



**SWC**

**Alan Strong**



**“ONE PLANET LIVING”**

**Alan Strong MBE**

**Smart Region Collaborative Officer**



SD - WHY

One Planet Living Context (by Bioregional)

SD - HOW

"Brundtland et al"

"Measure it & Manage it"

Sustainability Thinking

2.5 - 3 x Planet Lifestyle!

Sustainability Measurement



South West College Sustainability Strategy  
Learn – Live – Lead  
**LEGACY**



OPL 10 Guiding Principles	
BROAD	ASPIRATIONAL
TBL driven	APPLICABILITY
PROCESS	PRODUCT



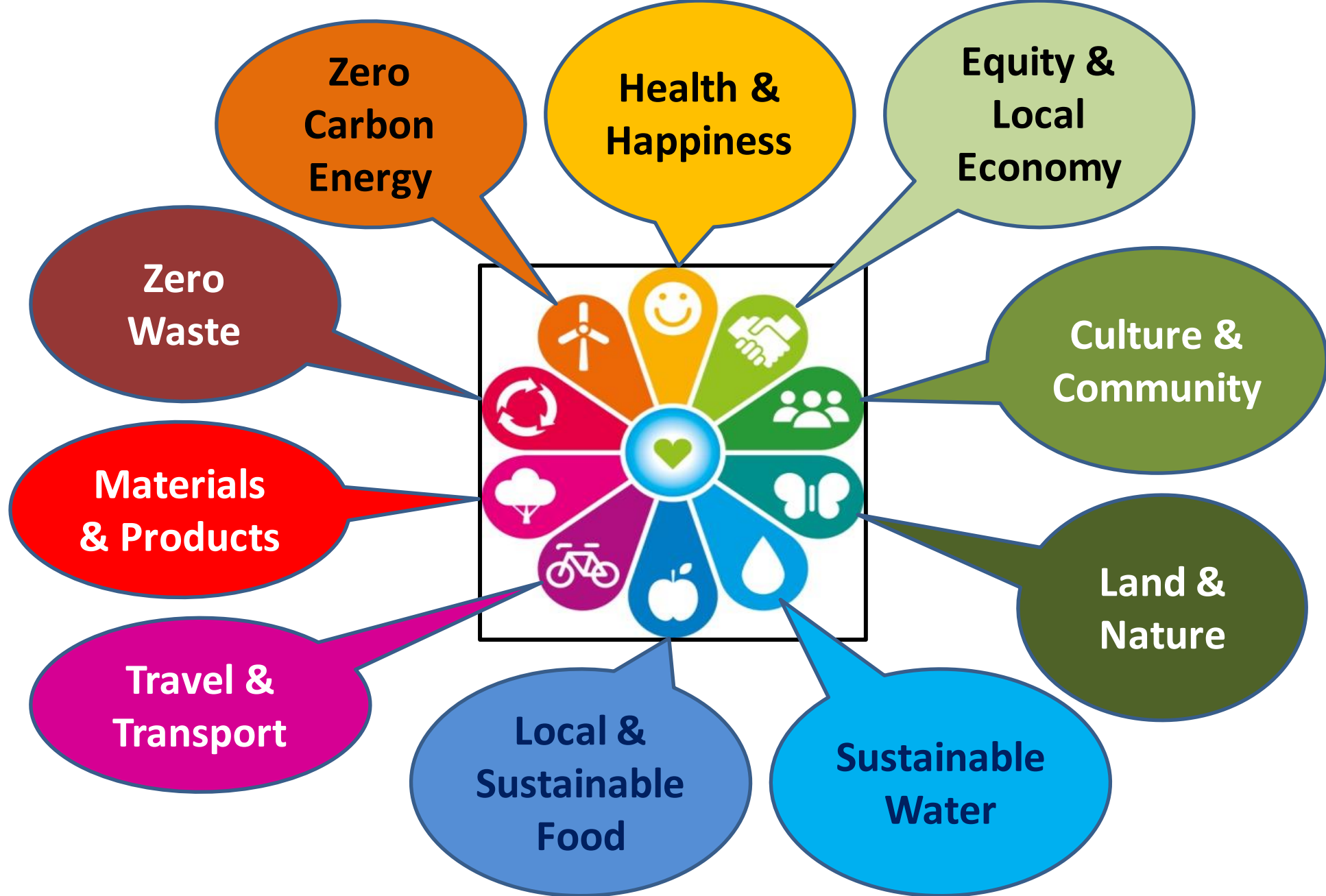
OPL JOURNEY .... Miles to run!

OPL ACTION PLAN

Vision  
Action Plan  
Outcomes  
Benchmarks  
Measurement  
'The Detail'

Smart Region Concepts





**OPL 10 Guiding Principles [Bioregional]**

The image features a central sunset over the ocean. The sun is a bright yellow circle on the horizon, with a gradient of orange and red in the sky. The water is dark with a shimmering reflection of the sun. At the top and bottom of the image are decorative borders consisting of overlapping, colorful triangles in shades of blue, green, yellow, and pink.

# One Planet Living

Miles to Run .. Promises to Keep .. People to Help

THANK YOU