

The Harlequin (*Harmonia axyridis*)

Adult (common variations)



Gavin Hatt

H.axyridis f.conspicua



Maris Midgley

H.axyridis f.spectabilis



Ken Dolbear

H. axyridis f. succinea



Ken Dolbear

H. axyridis f. succinea



Maris Midgely

H. axyridis f. succinea



Maris Midgely

H. axyridis f. succinea

The Harlequin (*Harmonia axyridis*)

Larvae



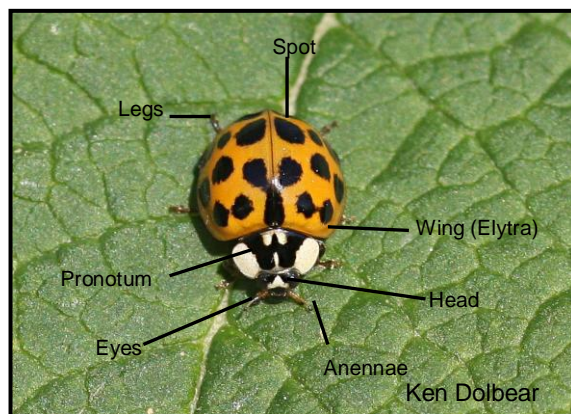
Pupae



Basic Description:

It is a large ladybird 7-8mm (1/4 inch)
Its wing colours and spots are highly variable:

- wing case (elytra) is either pale yellow-orange, orange-red or black.
- 0-21 orange-red or black spots or a grid pattern.
- The pronotum often has a distinct “W” shape on orange-red Harlequins.
- The leg colour is brown.



Distinguishing the Harlequin ladybird from other native ladybird species

If it is less than 5mm (1/5 inch) in length it is definitely not a Harlequin ladybird.