



Fermanagh & Omagh
District Council
Comhairle Ceantair
Fhear Manach agus na hÓmaí

Strule Arts Centre Visual Guide



What is the Strule Arts Centre?

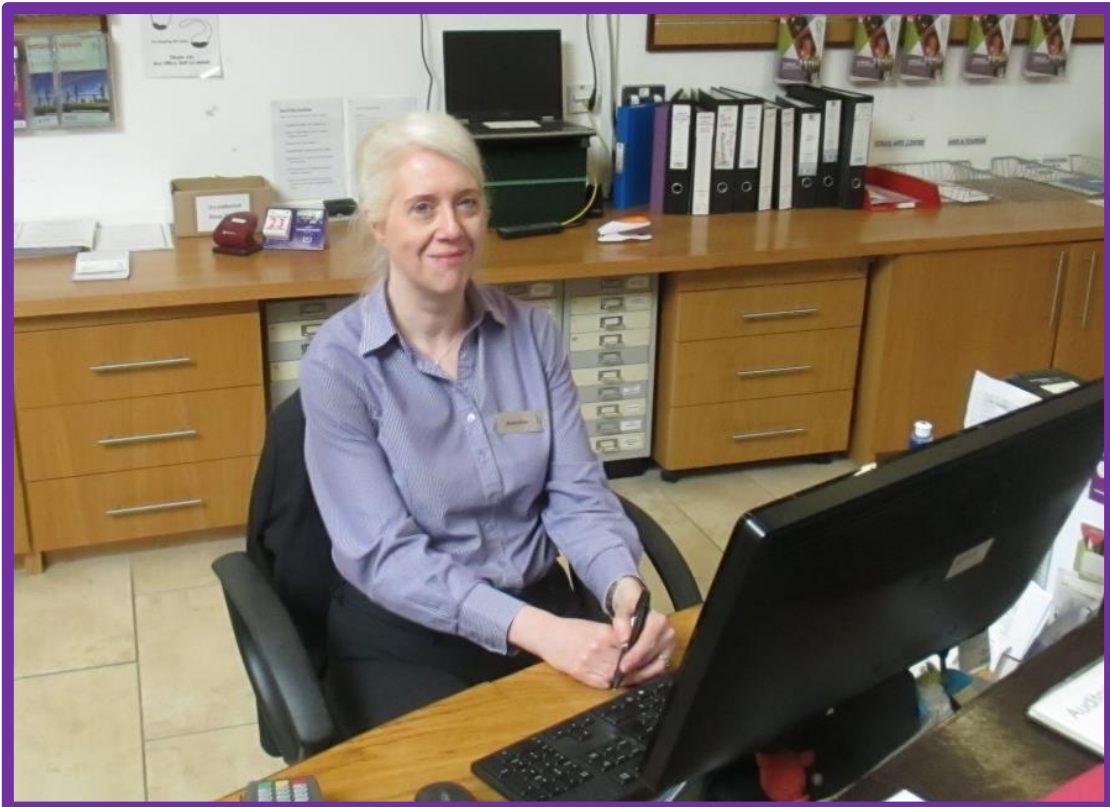
The Strule Arts Centre is a venue where you can come and see performances, singing, music, dancing and art. You can also take part in classes, talks and workshops.



Who can help me?

Any Member of Staff.

They will be wearing a uniform like this:



You can enter the building through two doors:

1) Entrance from Bridge Street (Level 1)



What will I see:

- Reception/ Box Office
- Display shelves
- Leaflets
- Stairs to Level 2
- White table and chairs
- Bar area
- Doors to the Auditorium



What will I hear:

- People talking
- Keyboard typing

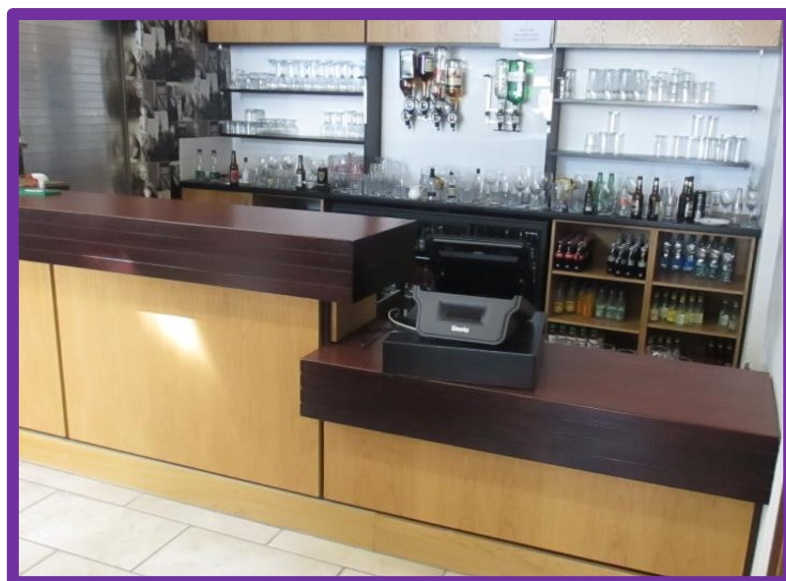


What will I feel:

- Box Office Counter
- Paper ticket
- White plastic chairs and tables

The Bar Area

You can order a drink before the performance or during the interval.



Doors to the Auditorium

- Before the performance the two doors into the Auditorium will be unlocked and opened.
- Before you go into the Auditorium, a member of staff will be standing at the door to check your ticket.
- They will look at your ticket, tear part of it off and give you back the part with your Row and Seat Number on it.
- You will then be able to go into the Auditorium and find your seat.



2) Entrance from High Street (level 2)



Level 2 Entrance



What will I see:

- Automatic doors
- Office counter
- Windows

What will I hear:

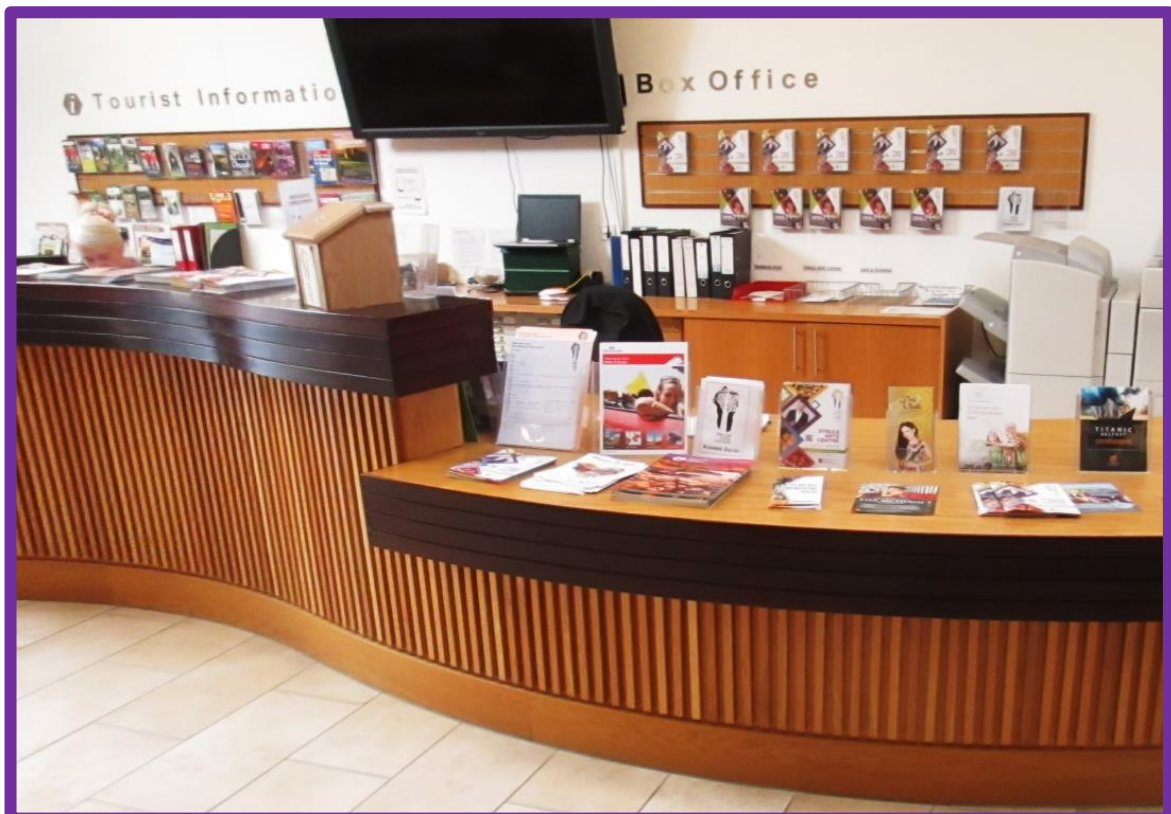
- Doors opening and closing
- People talking

To get to Box Office from this entrance you must take the stairs or the lift down to Level 1.

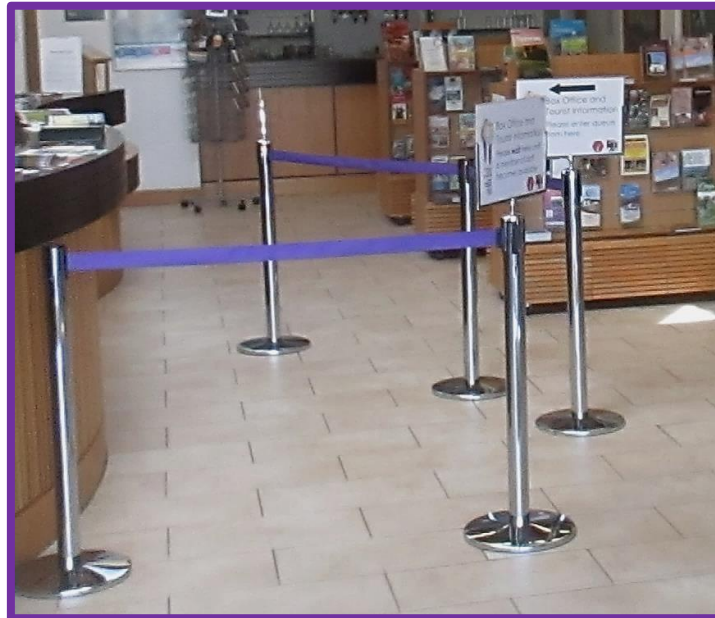
Box Office

What will I see:

- A Member of Staff
- Wooden desk
- Purple rope
- Metal poles
- Computer
- Leaflets and brochures

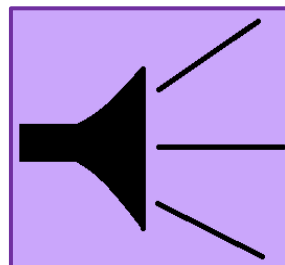


When buying your ticket you will have to queue at the metal poles and purple rope. There will be signs to show you how to queue.



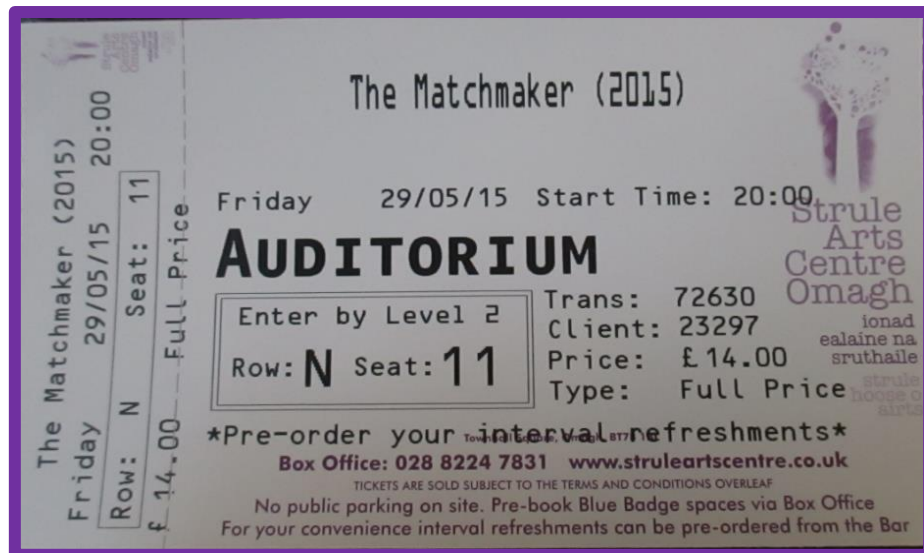
What will I hear:

- Loudspeaker
 - * There will be an announcement telling you that the performance will start in five minutes and to take your seats.



Ticket

At the Box Office Counter, you will be given a ticket by the member of staff.



The ticket will tell you:

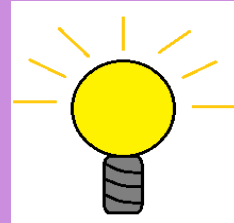
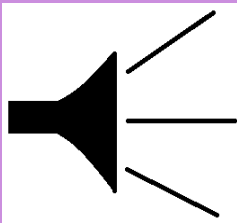
- The performance you are going to see.
- The date and time of the performance.
- The price you paid.
- Your Row and Seat number.

Before you enter the Auditorium a member of staff will need to look at your ticket and tear off a strip at the side.

They will then give you back part of the ticket, so you can find your seat.

The Auditorium

- *Please turn off your mobile phone before entering the Auditorium.**
- *You are not allowed to eat or drink in the Auditorium.**
- *During the performance there may be loud noises and flashing lights.**



Entrance

- You will enter the Auditorium through a hallway with wooden walls and floors.
- The wooden floor will squeak when you walk on it.





What will I see:

- Wooden floors
- Wooden walls
- Black seats
- Stage
- Microphones
- Performers
- Props
- Instruments
- Lights

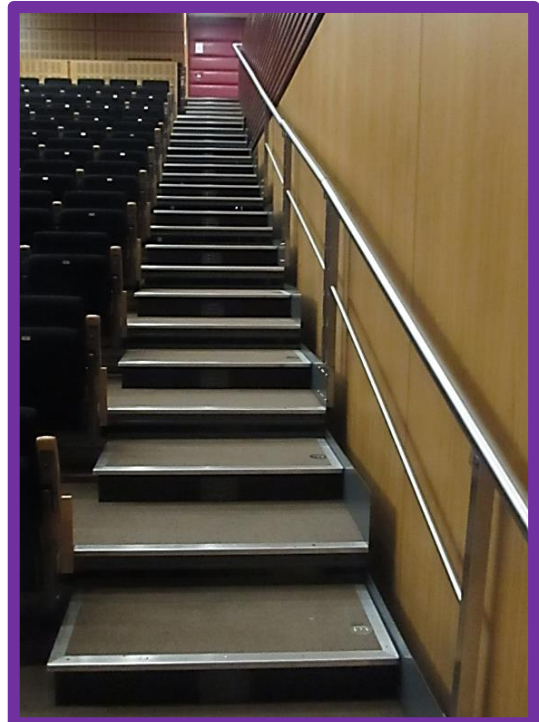


Lights

- Before the performance starts, the lights will be on so you can find your seat.
- When the performance starts the lights will go out and you will only be able to see the stage.
- Between the scenes the stage lights may go out and you will only see the emergency exit lights.
- During the break and at the end of the show the lights will come on.

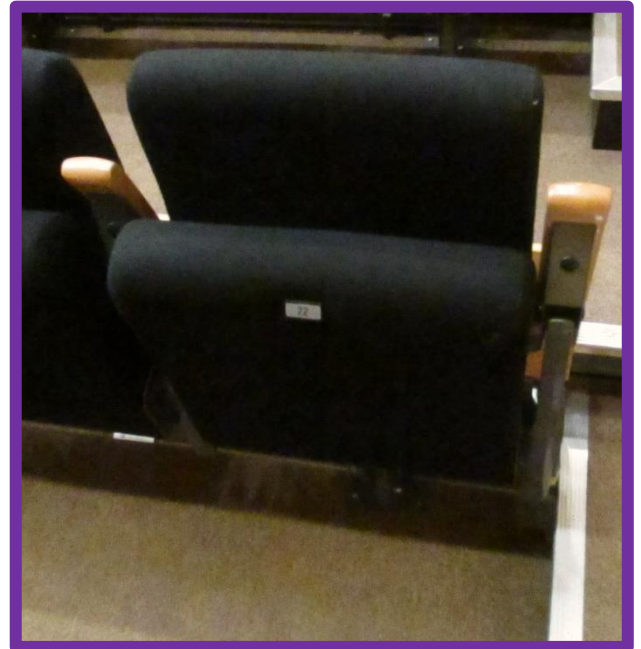
What will I hear:

- Actors talking and shouting
- Loud noises from the stage and speakers
- People may be shouting or laughing loudly



What will I feel:

- Black material on the chair
- Wooden armrest on the chair
- Handrail going up or down the stairs



Wheelchair Seats

There are 10 spaces available for people who use wheelchairs in Row D.

Interval

The performance may have an interval around the middle of the play.

During the interval you may get a drink in the bar/ café area and use the toilet, before going back into the Auditorium.

Toilet Signs

These signs will be on the doors of the toilets:



Ladies Toilets



Gents Toilets



Adapted Toilet

If you need help finding the toilets ask a member of staff and they will help you.

Toilets

What will I see:

- Sink
- Cubicles
- Toilet
- Hand Dryer



What will I hear:

- Toilets flushing
- Taps running
- Hand dryer blowing

What will I feel:

- Water on your hands as you wash them
- The air from the hand dryer blowing on your hand



Accessible Toilets



What will I see:

- Sink
- Toilet
- Hand dryer
- Grab rails
- Emergency pull cord
- Bin

*** In an emergency pull the red cord for help.**

Lift

What will I see:

- Metal lift doors
- Floor number
- Lift buttons

What will I hear:

- The lift's voice telling you that the door is opening and closing and what floor you are on.



What will I feel:

- Wooden walls
- A window on one side of the Lift.
- Buttons and floor number



Café



What will I see:

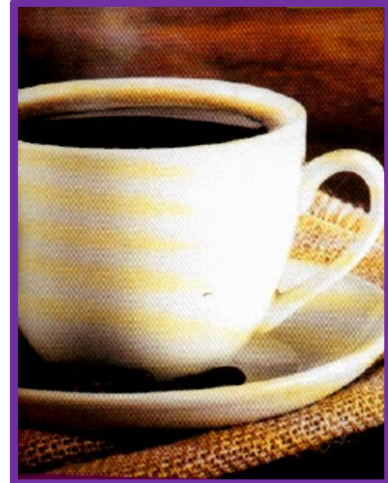
- People talking and eating
- Tables
- Chairs
- Bar
- Glasses
- Windows
- Art Exhibition area

What will I hear:

- People eating and talking
- Plates and glasses banging together
- Cooking

What will I smell:

- Cooking
- Food



What will I feel:

- Tables
- Chairs
- Plates
- Knives and forks
- Glasses
- Cups



Dance Studio



What will I see:

- Wooden floor
- Reflection from the mirrors on the wall
- White walls

What will I hear:

- Dancing
- Your footsteps on the floor
- Music

What will I feel:

- Rough walls
- Smooth mirrors

Exhibition Space



What will I see:

- Paintings
- Photos
- Sculptures
- White Walls
- Wooden Floor

What will I hear:

- People talking
- Noise from the café

Lecture Theatre



What will I see:

- Red chairs
- Large projector screen

What will I hear:

- People talking
- Noise from the speakers

What will I feel:

- Red chairs



Art Workshop



What will I see:

- Windows
- White walls
- Brown tiled floors
- Black tables and chairs

What will I hear:

- People talking
- People working on their art

What will I feel:

- Chairs
- Seats

Green Room



What will I see:

- White tables and chairs
- Black Leather Seats
- Kitchen Units
- Sink

What will I hear:

- Water running
- People talking

What will I feel:

- Plastic chairs
- Leather Seats