



Fermanagh & Omagh
District Council
Comhairle Ceantair
Fhear Manach agus na hÓmaí

Enniskillen Castle Visual Guide

This guide is designed to help provide information on areas that may be helpful for people with access requirements.



Enniskillen Castle

Enniskillen

Co. Fermanagh

BT74 7HL

+44 (0)28 6632 5000

castle@fermanaghomagh.com

Car Parking



Getting around the Venue



Entrance



You will see:

- Tarred road
- A grey path
- Grass lawns
- Flowers
- Trees
- Wooden Benches
- Stone Walls
- Gates

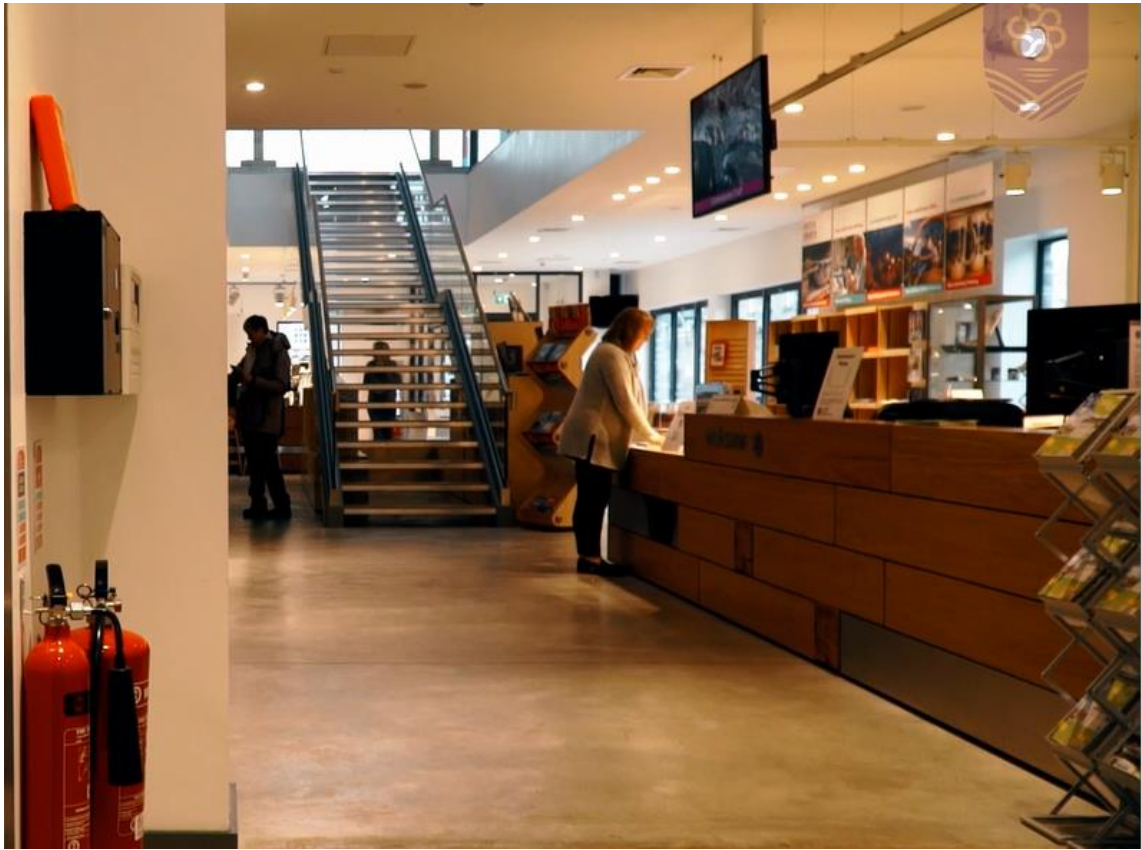
You may hear:

- People talking and laughing
- Birds
- Cars

You may smell:

- Flowers
- Grass

Reception



When buying your ticket you may need to queue at the reception desk.

You will see:

- Member of staff
- Wooden Reception
- Signs
- Display Cabinets
- Souvenirs
- Queue of people
- Tickets

You will hear:

- People talking
- Telephone ringing
- Keyboard typing
- Computer beeping

You will feel:

- Wooden desk
- Souvenirs

Stairs to Visitor Centre 1st Floor



Visitor Centre – 1st floor



You will see:

- Signs
- Display Cabinets
- Pictures
- Other visitors

You will hear:

- People talking
- Videos playing



Exhibition Areas



You will see:

- Member of staff
- Signs
- Display Cabinets
- Pictures
- Old objects
- Other people

- Videos
- Paintings
- Stairs

You will hear:

- People talking
- Videos playing

Lakelands 1 Gallery



Lakelands 2 Gallery



Full Circle Gallery



Stairway



Island Towns Gallery



Castle Courtyard



Cafe



What will I see:

- People talking and eating
- Tables
- Chairs
- Bar
- Glasses
- Windows
- Art Exhibition area

What will I hear:

- People eating and talking

- Plates and glasses banging together
- Cooking

What will I smell:

- Food

What will I feel:

- Tables
- Chairs
- Plates
- Knives and forks
- Glasses
- Cup

Lift



If you require any further information or guidance, please contact Enniskillen Castle on +44 (0)28 66 325000 or email castle@fermanaghomagh.com